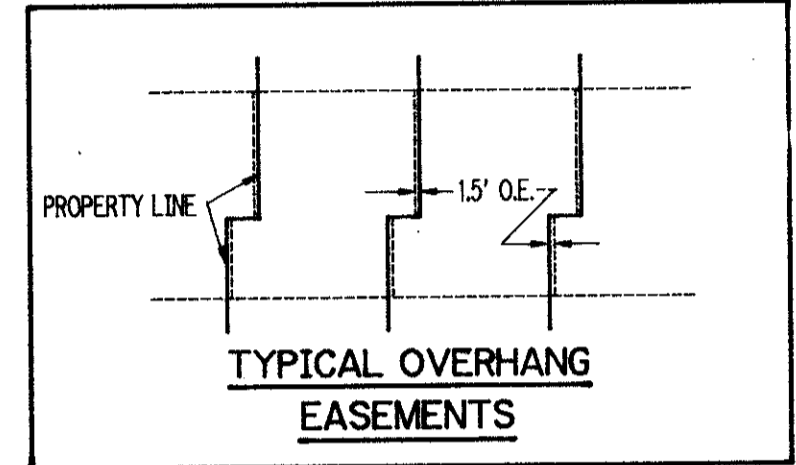
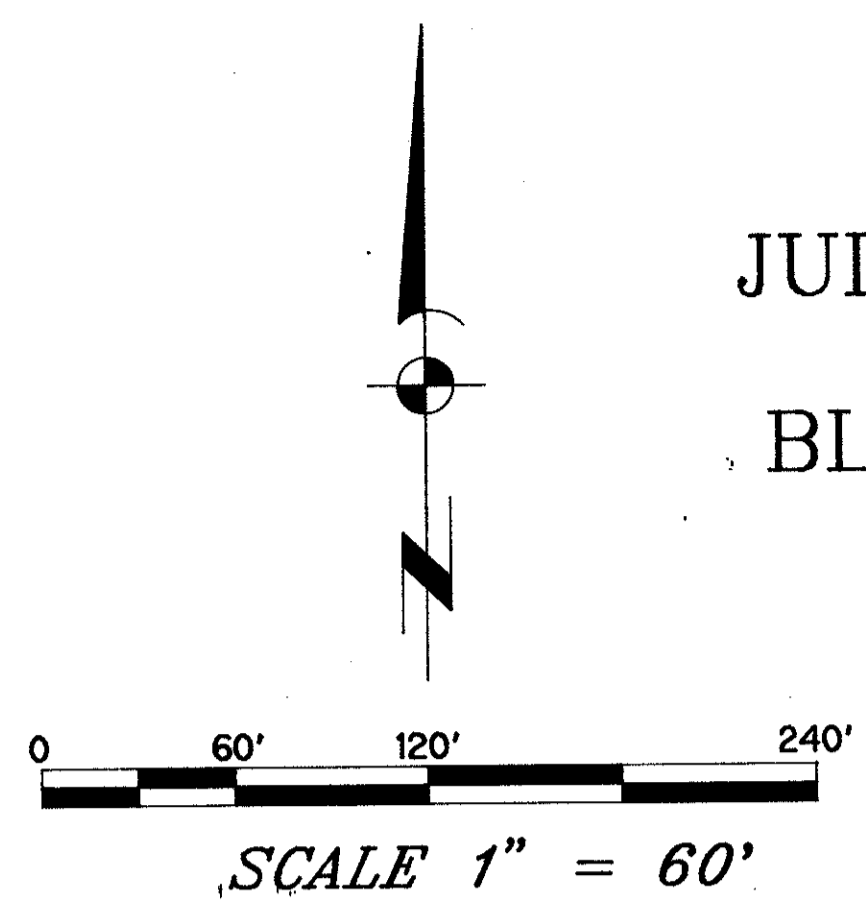


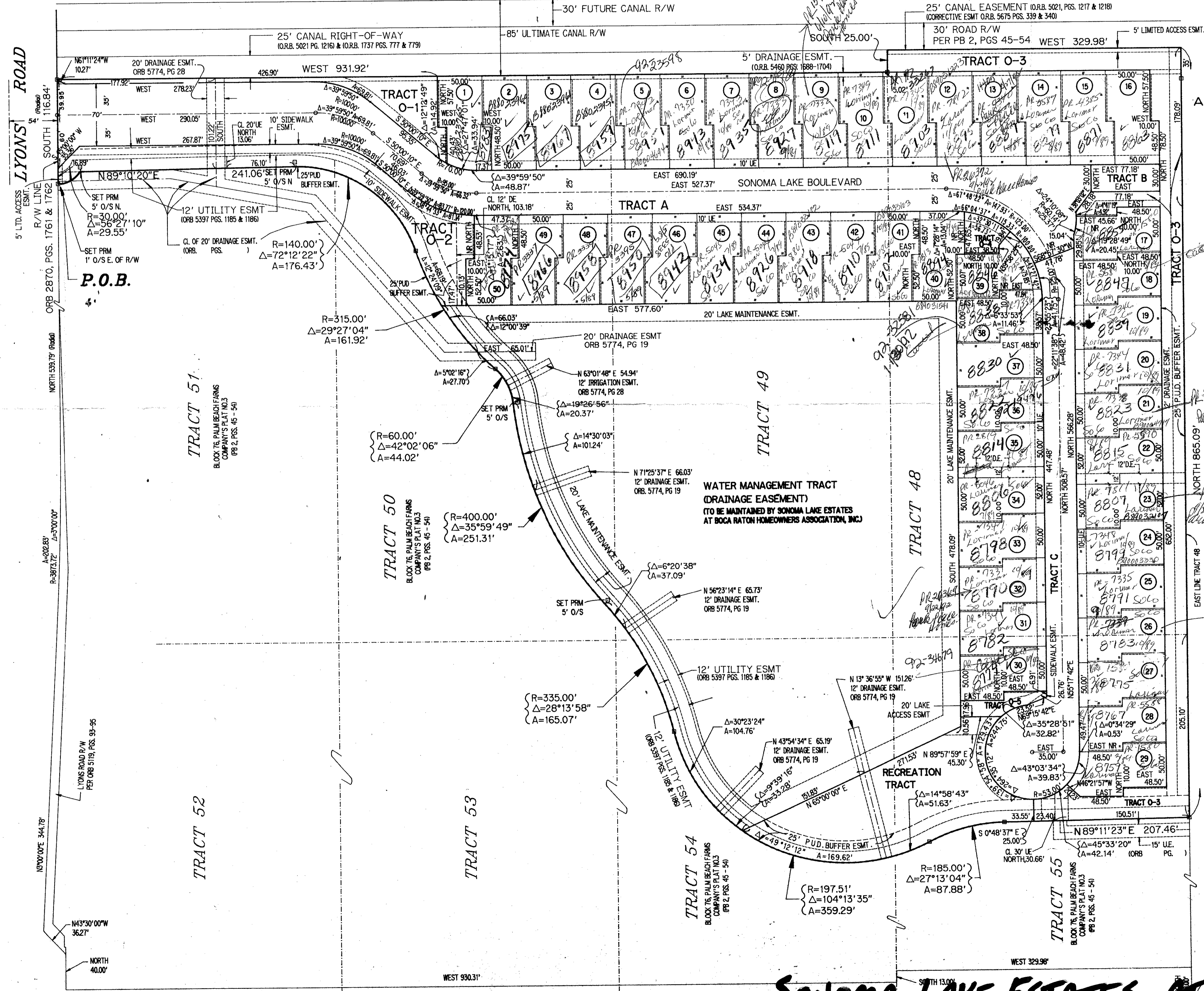
# SONOMA LAKE ESTATES AT BOCA RATON

JULY 1988 A PLANNED UNIT DEVELOPMENT PAGE 3 OF 3  
 BEING A REPLAT OF A PORTION OF TRACTS 48,49,50,51,54 & 55  
 BLOCK 76, PALM BEACH FARMS COMPANY'S PLAT NO.3 (PLAT BOOK 2, PAGES 45 - 54)  
 SECTION 17, TOWNSHIP 47 SOUTH, RANGE 42 EAST, PALM BEACH COUNTY, FLORIDA



PREPARED BY  
 AVIROM-HALL & ASSOCIATES, INC.  
 LAND SURVEYING  
 50 S.W. 2ND AVENUE, SUITE 102  
 BOCA RATON, FLORIDA 33432  
 (407) 392-2594  
 (Catherine Harris)

*Sonoma Lake Estates (C.B.R.)*  
 SUBDIVISION 51  
 2328  
 11/17/82  
 62 B  
 RS 86-19  
 33434  
 53  
 TRAZ 775  
 Price: \$1000



*BOCA GLADES NO. 1  
 (P.B. 50, PG. 7 & 8)*

*Park Place Homes  
 92-23599*

*0555-001*

ADD BY  
 CHECKED BY

*0349-004  
 wrong changed.*

*62/51*

P.O.C.  
 S.E. CORNER TRACT 55, BLOCK 76  
 PALM BEACH FARMS COMPANY'S PLAT NO. 3  
 (P.B. 2, PGS. 45-54)

## SONOMA LAKE ESTATES AT BOCA RATON